



BLOOMFIELD TOWNSHIP

Newsletter

Spring 2004

BOARD OF TRUSTEES

Elected Officials

ADMINISTRATION

Dave Payne, Supervisor
Wilma S. Cotton, Clerk
Dan Devine, Treasurer

TRUSTEES

Sherry Stefanos
Janet M. Roncelli
David B. Buckley
Neal J. Barnett

PLANNING COMMISSION

Appointed Positions

David J. Lubin
Richard D. Mintz
Jane Reisinger
Jeffrey Salz
Sherry Stefanos
John M. Swoboda
Robert L. Wittbold

BOARD OF APPEALS

Appointed Positions

Dan Devine
Brian E. Kepes
Corinne Khederian
Leo Savoie
Lisa Seneker
John Swoboda
Jim Aldrich - Alternate
Diane Kraft Finney - Alternate

BLOOMFIELD TOWNSHIP OFFICES

4200 Telegraph Road
PO Box 489
Bloomfield Hills, MI 48303-0489
www.bloomfieldtp.org

Inside this Issue:

- Second Water Meter 2
- Ballot Language, con't 2
- Parents Who Host 2
- Gypsy Moth 3
- Emerald Ash Borer 3
- Public Safety Path 4
- Millage Renewal 4
- West Nile Virus 5
- Township Calendar 5
- Pull-Out Safety Path Map!

Board of Trustees Considers New Public Services Facility

Bloomfield Township voters may soon decide if the Township's Public Services Facility will be replaced. On March 22, 2004 the Board of Trustees considered the cost of a possible 25-year, 0.2656 millage proposal that could be placed on November's ballot. The Board will determine whether to place the item on the ballot at a meeting later this year. If voters pass such a proposal, a new facility would be built to house and service the Township's road maintenance

equipment, the service area for all Township public safety vehicles, the Water and Sewer Department staff and the Communications staff.

trucks are stored outside, only to become the first victims of a snowstorm.

The current building cannot provide for its own fleet of vehicles and equipment. It is plagued with deficiencies and safety concerns. Township residents have invested millions of dollars in a modern fleet of vehicles for fire, police, water and road services, but mechanics must struggle to maintain them under inadequate conditions. The building lacks even the most basic of tools, such as a vehicle hoist.

The millage would cost the average homeowner \$50.00 per year for 25 years, based upon the taxable value of most Bloomfield Township homes.

Taxable Value	0.2656 mils per year
\$100,000	\$26.56
\$150,000	\$39.84
\$200,000	\$53.12
\$250,000	\$66.40

To determine the taxable value (not market value) of your home, please refer to your most recent tax statement.

A new facility is necessary for many reasons. Most urgent is the need to get \$2,000,000 of road maintenance and snow removal equipment inside, out of the elements. Half of the road department's fleet of salt

Board will determine whether to place the item on the ballot at a meeting later this year. If voters pass such a proposal, a new facility would be built to house and service the Township's road maintenance

Continued on page 2

Neal J. Barnett Appointed to Board of Trustees



Neal J. Barnett
Bloomfield Township Trustee

At the Bloomfield Township Board Meeting on February 9, the Bloomfield Township Board of Trustees voted unanimously to appoint Neal Jay Barnett to fill the seat left vacant by the death of Jerry Tobias. Township Supervisor Dave Payne welcomed him by

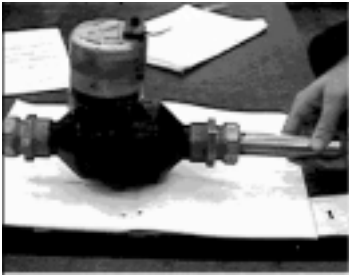
saying, "Neal is uniquely qualified to serve as a Township Trustee. He has already demonstrated his commitment to the Township and will be a great asset to the Board. I look forward to working with him."

Mr. Barnett is Managing Partner in the Bloomfield Township law firm of Sills, Charboneau, Fiedler & Barnett, PC. He has been a member of the Bloomfield Township Zoning Board of Appeals (ZBA) since early 2001 and became its vice-chair in January 2004. For the past four years, Mr. Barnett has been President of the Oakland Hills Country Club Subdivision Association Board; he has been a member of that Board for eight years.

Mr. Barnett has a special interest in issues affecting senior citizens. He is part of the AARP Legal Services Network and devotes much of his professional practice to estate planning and asset protection.

Mr. Barnett said, "My experience on the ZBA has given me first-hand knowledge of the development and re-development issues facing the Township. Additionally, being active in a homeowners' association helps me understand the dynamics that take place when considering issues affecting residents. I am grateful for the opportunity to contribute to my community."

Use a Second Water Meter to SAVE on Sewer Charges, Monitor Your Outside Water Usage




Historically, homeowners connected to the Township water and sewer system used one water meter to measure their total water usage and would be billed for both sewer and water services combined. That meant that outdoor water usage - accounting for as much as 65 percent of all water used during summer months - which does not require treat-

ment by the sanitary sewer system, was being charged for sewer service.

In July 2003 the Township Board adopted a new ordinance to help you reduce your sewer charges and monitor your outside water usage. You may now purchase a second meter to measure water used outside. You will receive two bills; one for water usage inside that includes both water and sewer charges, and a second bill for water-only charges on usage from the second meter.

In the first three months of the program, over 200 customers purchased a second water meter. They took advantage of the Township's simple one-stop

process that allows homeowners or their plumbers to obtain the meter and the required plumbing permit at the same counter. The homeowner or plumber is responsible for installing the new meter as well as doing any additional plumbing changes necessary to meet the Water Department standards. After completion and inspection by the plumbing inspector, the Water Department will install the electronic equipment to read the meter remotely. In cases where the existing meter is over 10 years old the Water Department will also replace the inside use water meter with a new type of meter capable of reading remotely at no additional cost to the homeowner. 

Public Services Facility - Continued from Page 1

For detailed information about the inadequacy of the current facility, please refer to the Winter '04 newsletter which can be found on the Bloomfield Township website, www.bloomfieldtp.org.

If the millage is passed, the Board of Trustees will proceed with the construction of a \$16,000,000 facility that will provide space for large road maintenance and snow removal vehicles to be kept inside, adequate work bays for servicing today's larger fire-fighting equipment, service areas for working on police cars and other Township vehicles, and work areas for Communications and Water & Sewer personnel. The new facility would be approximately 116,200 sq. feet; today's facility is 35,779 square feet.

The existing facility, built in 1961 and added onto in 1967, 1969 & 1974, was intended to accommodate the limited services Bloomfield Township

provided at that time. It was planned to be a garage for the police and fire vehicles the Township operated to serve a population half the size of today's Township population.

Back then, just like all other townships throughout the state, Bloomfield Township did not maintain or plow any Township roads or streets. The Road Commission for Oakland County (RCOC) had that responsibility. Because the RCOC provided coverage for the entire county, Bloomfield Township residents often had to wait several days before its own roads were cleared after a snowstorm. Additionally, scheduled road maintenance was not an RCOC priority. In order give Township residents more responsive service, Bloomfield's elected officials set out to change state laws to allow the Township to offer its own road maintenance service. They were successful, and Bloomfield Township became

the only township in the state to take care of its own sub-local roads and contract with the county for services on main roads only.

While this set a higher standard of service for Township residents, the growth of the facility did not keep pace. In addition, the population has doubled since then, making more vehicles necessary. Over the last four decades, several additions were added. Each one made an improvement, but the situation now calls for a more comprehensive solution.

The proposed facility will enable Township services, including police and fire services, to remain at a high standard in a more efficient, economically responsible manner. The cost to most Township residents to achieve this will range from \$25 - \$70 a year.






Cheers!

The Bloomfield Township Fire Department has been awarded the 2004 Heartsafe Community Award by the International Association of Fire Chiefs. The Award is given to just two communities in the entire country that have achieved excellence in creating and promoting outstanding public access defibrillation programs.

Bloomfield Township received the award for communities with populations under 100,000. Washington DC Fire Department won the award for communities with populations over 100,000.



The Bloomfield Township Police Department, in cooperation with the Birmingham Bloomfield Community Coalition, reminds you that:

-  Parents who provide alcohol to their children's friends under any circumstances, even in their own homes, are breaking the law.
-  Parents who knowingly allow a person under 21 to remain in their home or on their property while consuming or possessing alcoholic beverages can be prosecuted. Everything associated with such a violation can be confiscated, including personal property.
-  Parents can be held liable if they give alcohol to anyone under 21 and they in turn hurt someone, hurt themselves, or damage property.



Gypsy Moth Suppression Program Will Continue



While most of Oakland County suffered a dramatic increase in gypsy moth infestation last year, Bloomfield Township's gypsy moth population decreased slightly. The National Gypsy Moth Management Group, the company that has successfully implemented the Integrated Pest Management Program since 1993, reported that in 42 of the 48 sites with the highest infesta-

tion in the Township, the gypsy moth population was reduced and no defoliation or tree mortality was observed.

The company uses the fungus *E. maimaiga* in its fight against the pest that eats the leaves from the Township's beautiful trees. The fungus is entirely safe for humans, animals and the environment.

The infestation, however, is still sufficiently high to warrant control measures this year. The Board of Trustees has renewed the Gypsy Moth Management Agreement for 2004. They have determined that risk assessment surveys should continue at specific locations to observe egg mass

density, size and condition. The inoculations of the fungus will be released at sites with the highest density. Ground spraying of individual trees with a safe biological insecticide will take place at five sites.

For further information, please call Bloomfield Township at: **248-433-7709**

or visit

www.michigan.gov/mda



Participate in River Day 2004!

Explore the Rouge River Ecosystem

Saturday, June 5, 2004

10:00 AM - 11:00 AM

E.L. Johnson Nature Center

3325 Franklin Road

248.341.6487

No charge!

Activities are designed for all ages.

Search for wildlife and animal signs. Take a water sample of and bring it back to the lab so you can identify macro-invertebrates under a microscope. Use a water quality index to determine the water quality score. Pre-Register by calling 248.341.6487. *Leave your name and the number of participants.*

Prevent the Spread of the Emerald Ash Borer



The EAB produces distinctive tunneling in declining ash trees, which is serpentine or zigzag in appearance

Emerald Ash Borer, an exotic insect from Asia, has damaged or killed millions of ash trees in Southeast Michigan and continues to threaten more than 700 million ash trees in the state.

In order to contain and to stop the spread, a statewide QUARANTINE was expanded to include Livingston, Macomb, Monroe, Oakland, Washtenaw, Wayne, Genesee, Ingham, Jackson, Lapeer, Lenawee, Saint Clair, and Shiawassee counties.

The order:

- ☞ Establishes a one-year moratorium prohibiting the sale and movement of ash nursery stock from, into and within Michigan's Lower Peninsula, with a full review slated a year from now to determine whether it should be continued;
- ☞ Bans the movement of all firewood of ANY species from the quarantined counties, and
- ☞ Prohibits the movement of any ash materials, including logs, branches and other items unless chipped to 1 inch or less, and firewood of any species, from within the core Emerald Ash Borer-infested zone to anywhere else in the quarantined area or state.

The Township has passed an "Emerald Ash Borer Resolution" that outlines preventive and curative management practices for residents to follow. You can pick up a copy of the resolution and additional resources at the Clerk's Office or view the Community link on the Bloomfield Township web site:

www.bloomfieldtp.org

To help reduce further loss of ash trees, plant health officials recommend an integrated approach of proper sanitation, diversity in new plantings, practicing sound tree care, and possibly using appropriate insecticide applications beginning in early spring.

To learn more about Emerald Ash Borer symptoms, life cycle, and treatment /control options contact the local Michigan State University Extension Office at 248-858-0902.

Other sources of information include the Michigan Department of Agriculture's Emerald Ash Borer web site: www.emeraldashborer.info and www.michigan.gov/mda.



Public Safety and Safety Path Millage Renewals on August Ballot



Bloomfield Township residents will be asked to approve three millages to replace millages that have already expired or will soon expire. The proposals will come before voters in the primary election on August 3, 2004.

The millage that funded the recent construction of 20 miles of safety paths expired in

December 2003. To continue this project, voters will be asked to renew .50 mills (50 cents for every \$1,000 of taxable value, raising approximately \$1,690,500 in the first year of levy. (*See related story below.*)

There are two public safety millages that will require renewal. The first, for 1.17 mills (\$1.17 for every \$1,000 of taxable value), expired in December 2003. A renewal of this millage will raise approximately \$3,955,900 in the first year of levy and allow for the continuation of public safety services at current

levels. The second, for approximately .72 mills, will expire in December 2005. Voters will be asked to renew approximately .70 mills which will raise \$2,366,700 in the first year of levy to continue current services. The millage will not be levied until the current millage expires.

Altogether, the three renewals will continue a homeowner's rate at approximately \$2.39 per year for every \$1,000 of the property's taxable value. This amount is about the same as the homeowner is currently paying; it is *NOT* an increase.

Millage Renewal Summary

Public Safety:

- ☞ 1.17 mills to replace the millage that expired December 2003.
- ☞ .72 mills to replace a millage due to expire in December 2005. It will not be levied until the current millage expires.
- ☞ Necessary to continue police, fire and EMS services at current levels. *NOT* an increase.
- ☞ *Continues* your current tax rate.

Safety Paths:

- ☞ Renews approximately 0.50 mills for a five-year period.
- ☞ Will fund 9.5 miles of new safety paths that are planned to connect existing safety paths in response to residents' requests.
- ☞ *Continues* your rate of approximately \$0.50 for every \$1,000 of taxable value.

Combined the three millage renewals will:

- Continue a homeowner's rate at approximately \$2.39 for every \$1,000 of taxable value;
- Continue police, fire and EMS services at current levels;
- Add 9.5 miles of safety paths throughout Township.



Millage Renewal for Continuation of Safety Paths on August Ballot



Sue Ahern and daughter Lizzie take their dog Rusty for a walk on the safety path along Lahser Road south of Lincoln

In the August primary election, voters will be asked to renew a millage to fund the completion of safety path construction throughout Bloomfield Township. The Township currently has approximately 29 miles of safety paths; 20 miles of paths were constructed between 1999 and 2003 with funds provided by the first safety path millage. The August proposal would allow for the construction of 9.5 miles of safety paths.

The original paths were constructed to help children walk safely from their neighborhood to their local school. Additional paths are needed to allow for the safety of residents who, with a renewed interest in health and fitness, walk, jog or bike on the roadways. The proposed safety paths

would allow them to cover extended distances while they enjoy their exercise safely, out of the way of traffic.

In response to residents' interest, the Township Board, working with consulting engineers, developed a preliminary Safety Path Master Plan.

The Plan:

- ☞ Identifies and locates existing safety paths which may be utilized as the basis for a Township-wide

coordinated path system.

- ☞ Anticipates usage, based on observation and citizen requests.
- ☞ Takes into account the ability to construct within the existing right-of-way. Preserves, to the greatest degree possible, the surrounding natural features.
- ☞ Determines feasibility and cost of potential paths.

This preliminary Safety Path Master Plan addresses requests Township residents have made. It also makes logical connections between existing paths. The preservation of the natural features in the area and location of the paths will be of primary importance when developing a final plan.

If you have any questions, comments or need additional information, please call:
(248) 433-7733 ☞

West Nile Virus Incidence Down, but Treatment Continues

Compared to numbers from 2002, Oakland County experienced a very mild outbreak of illness caused by West Nile Virus (WNV) in 2003. Two confirmed human cases and one possible death were associated with WNV in 2003, compared with 219 confirmed cases and 20 deaths in the summer of 2002. There is no definitive explanation why the incidence of WNV declined, but experts hypothesized that the spring/summer precipitation, the decrease in the crow population (primary reservoir for WNV), the insecticide treatments and public response all helped.

According to the Centers for Disease Control and Prevention, the risk of WNV still exists. Persons over 50 years of age and those with immune problems or other chronic illness are at highest risk for serious illness from WNV.

Bloomfield Township initiated a Mosquito Management Program in 2003 that calls for the identification of mosquito breeding sites, sampling of mosquito eggs, larvae and pupae and application of biological insecticides. BioBase Technologies, Inc., contracted by the Township, treated over 1,800 sites, mostly catch basins, which were determined to be high priority. The company later sampled the areas that were treated to determine the effectiveness of the application and concluded that the treatments reduced mosquito larval populations by 95% within the public areas. The Board of Trustees recently approved the Mosquito Management Agreement and all components of the program will be continued in 2004.

Mosquito Smarts

The Culex pipien and Culex Restuans mosquitoes are primarily involved in the transmission of WNV. These mosquitoes are abundant in urban areas. The larvae prefer water with high organic content, such as sewer drains, catch basins, settling lagoons and similar situations. Adult female mosquitoes bite birds that host the virus. Protect yourself and your family from mosquito-borne disease by following the three R's: *Reduce, Repel and Report.*

Reduce Areas Where Mosquitoes Breed

Reduce mosquito breeding sites by draining standing water in your yard. Empty flowerpots, buckets, toys, pet bowls, clogged rain gutters, boats and discarded tires. Wash birdbaths weekly to prevent build-up of algae and dead leaves. Keep swimming pools clean and chlorinated and drain water that collects on top of pool covers. Drain unused pools. Aerate ornamental pools or stock them with surface feeding minnows. Maintain window and door screening. Mow your lawn on a regular basis, cutting tall grass and weeds next to foundations and fence lines.

Repel Mosquitoes

When possible, wear long sleeves, long pants and socks when outdoors. Mosquitoes may bite through thin clothing so spray clothes with repellent to provide extra protection. Limit outdoor activity at dusk and dawn when mosquitoes are most active. Avoid shaded and wooded areas where mosquitoes may be present.

Apply insect repellent containing no more than 35% DEET. Follow carefully the manufacturer's directions on the label. Avoid using repellent on children under 2 years of age. On children 2-6 years of age, repellent should be used sparingly and contain only 10% DEET. Be careful using repellent on the hands of older children because repellents may irritate the eyes and mouth.

Report Dead Crows

Report all dead crows to the local Bloomfield Township Hotline at **248-642-7645**.

Leave a phone number and the address where the crow was found. Avoid touching the dead bird with bare hands. Use gloves or double plastic bags to pickup the bird. Place the dead bird in a double plastic bag and dispose it in a garbage receptacle for pickup. Also, report potential mosquito breeding areas via the Township Hotline.

Information

For more mosquito-smarts information refer to additional resources at:

www.bloomfieldtpw.org
www.co.oakland.mi.us
www.michigan.gov



TOWNSHIP MEETINGS

BOARD OF TRUSTEES

Time: 8:00 pm
Days: 2nd and 4th Monday of each month
Location: Township Auditorium

PLANNING COMMISSION

Time: 7:00 pm
Days: 1st and 3rd Monday of each month
Location: Township Auditorium

ZONING BOARD OF APPEALS

Time: 7:00 pm
Days: 2nd Tuesday of each month
Location: Township Auditorium

Note: The Charter Township of Bloomfield will provide necessary, reasonable auxiliary aids and services at all meetings to individuals with disabilities. All such requests must be made at least five days prior to said meeting. Please contact Bloomfield Township's Clerk's Office.

Clerk's Office
 PO Box 489
 Bloomfield Hills, MI
 48303-0489
 Telephone: 248.433.7702
 Fax: 248.433.7714
 email: clerk@bloomfieldtpw.org
www.bloomfieldtpw.org





Your're Invited!

Help us celebrate 20 years of outstanding community access television! Bloomfield Community Television produces hundreds of programs every year that focus on the people, places and events that make Bloomfield Township such a unique community. Come to an Open House and meet the people you see on your Channel 15!

BCTV Open House

Thursday, June 17, 4:30 - 6:30
Bloomfield Community Television
Dublin Drive at Exeter Road,
across from Township Hall.

No Charge. Please RSVP
by calling:
248.433.7790
or email:

Cable_Dept@Bloomfieldtwp.org



Bloomfield Township Board of Trustees



Front Row (L - R) Wilma Cotton - Clerk; Dave Payne - Supervisor; Dan Devine - Treasurer
Back Row (L - R) Trustees - David Buckley; Janet Roncelli; Sherry Stefanos; Neal Barnett

Wilma S. Cotton Clerk **Dave Payne** Supervisor **Dan Devine** Treasurer

TRUSTEES

Sherry Stefanos **David B. Buckley**
Janet M. Roncelli **Neal J. Barnett**

The Bloomfield Township Police Department will conduct free home security surveys for Township Residents. The surveys will aid you in assessing and improving the security of your home. Contact Officer Pete Matejck at: 248.433.7724 to set up an appointment

BLOOMFIELD TOWNSHIP DIRECTORY

Police / Fire / Emergency
911

Water / Sewer Emergency
433.7730

Administration 433.7700
Fax 433.7714

Accounting 433.7712

Assessor's Office 433.7710

Building Dept. 433.7715

Clerk's Office 433.7702

Community Cable 433.7790

Fax 642.7624

Fire Department

Non-Emergency ... 433.7745

Fax 433.7787

Planning 433.7795

Fax 433.7729

Police Department

Administration 433.7750

Non-Emergency ... 433.7755

Fax 433.7784

Animal Welfare 433.7757

Investigations 433.7760

Alarm Info 433.7775

Property 433.7777

Records 433.7776

Road Department 433.7709

Fax 433.7786

Township Library 642.5800

Treasurer's Office 433.7705

Water & Sewer 433.7731

US POSTAGE
PAID
PRSR STD
BLOOMFIELD TWP
PERMIT NO 40

BLOOMFIELD TOWNSHIP
4200 TELEGRAPH ROAD
PO BOX 489
BLOOMFIELD HILLS MI 48303-0489

